



Cycling North Somerset

Portishead public art path



*When shall we three
meet again...?*
Robert Stuart Clamp



This 3½ mile loop is a mixture of on-road and off-road paths, on the level, exploring the remarkable public art around the marina in Portishead.

A numbering system was developed for the original, on foot, public art trail but the numbers do not appear in a chronological order during this ride. Riders will need to dismount their cycles when crossing the marina gates between artworks 6 and 4.



Towards the Sky
Ann Christopher RA



Arc of Angels
Rick Kirby



Starting point:
Parish Wharf leisure centre,
Harbour Road, BS20 7DD





Portishead public art path

1



Flying

*Lucy
Glendinning*

2



**When shall
we three meet
again...?**

*Robert Stuart
Clamp*

3



Elemental

Matt Stein

4



Arch

Rick Kirby

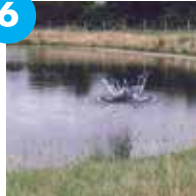
5



Fallen Nails

Cod Steaks

6



Splash

Cod Steaks

7



Ox

Jason Lane

8



**Full Fathom
Five**

*Michael
Dan Archer*

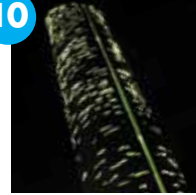
9



Ship to Shore

Jon Buck

10



**Energy
Artwork**

Mark Merer

Use this sheet to keep track of all the artworks you see on your cycle ride. If you take any photos please do share them with us using the hashtag #portisheadart at:



Flickr – flickr.com/photos/betterbybike



Facebook – facebook.com/betterbybikeUK



Twitter – @betterbybike

11



**The Bristol and
Portishead Pier
and Railway
Co 1867**

Michael Disley

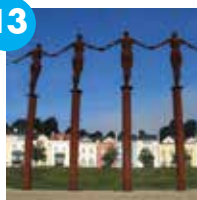
12



**Sculptural
Garden**

*Forge
projects*

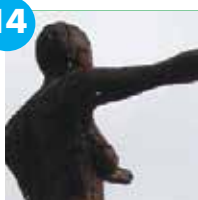
13



Arc of Angels

Rick Kirby

14



Echo

Rick Kirby

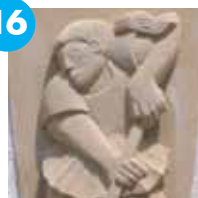
15



**Grilles to Car
Park**

*Matthew
Fedden*

16



**Gordano
Hockey Club**

Michael Disley

17



**Towards
the Sky**

*Ann
Christopher RA*

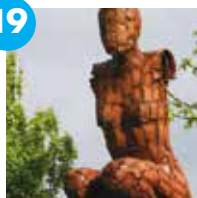
18



**Captain
Ashford**

Michael Disley

19



Crouch

Rick Kirby

20



**Gates/fencing
to Portishead
Primary School**

*Matthew
Fedden*



*Gates/fencing to
Portishead Primary School
Matthew Fedden*

Arch
Rick Kirby



For more information about the artworks
go to www.publicartportishead.co.uk.



- Visit our website to download all rides onto your Smartphone via GPX/KLM/Map My Ride
- Print each ride via PDF
- Comment and share your favourite rides via Facebook / Twitter
- Keep up to date with upcoming cycling events and news
- Share your cycle ride photos via Flickr

 Flickr - [flickr.com/photos/betterbybike](https://www.flickr.com/photos/betterbybike)

 Facebook - [facebook.com/betterbybikeUK](https://www.facebook.com/betterbybikeUK)

 Twitter - [@betterbybike](https://twitter.com/betterbybike)

www.betterbybike.info

for maps, advice and everything you need to get cycling



Bristol, Bath & NE Somerset, North Somerset and
South Gloucestershire region.